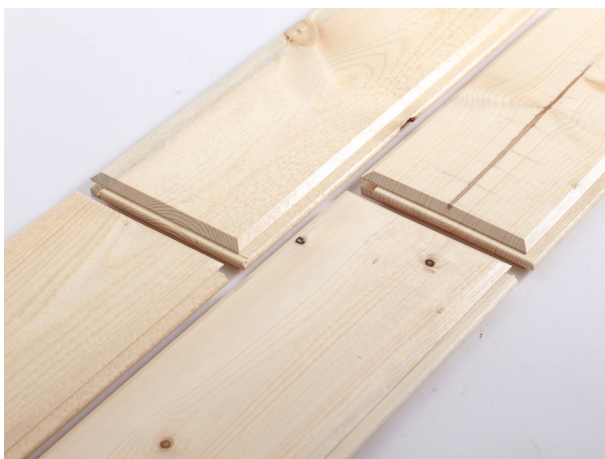


# REALSOFFIT™ YOUR NATURAL SOFFIT CHOICE

REALSOFFIT™  
BY WOODTONE



**FACTORY PREFINISHED**  
**UNMATCHED QUALITY APPEARANCE**  
**TIME TESTED... BUILDER APPROVED**  
**100% RENEWABLE RESOURCE**  
**DESIGN FLEXIBILITY**



## RealSoffit™

Available in 1x4 and 1x6 End-Matched Tongue & Groove V-Joint boards, RealSoffit™ is coated with either our proprietary Hybrid Alkyd Emulsion™ primer or a semi-transparent stain. RealSoffit™ is made from appearance grade Lodgepole Pine and is available in 10'-14' lengths. Our end-matching pattern eliminates the need to hit a stud or ceiling rafter. This reduces waste and makes for efficient installation. RealSoffit™ is a great way to save time and money while providing high-quality natural wood soffit. RealSoffit™ is also available in custom patterns with a variety of pre-finishing options.

## COATING TECHNOLOGY

RealSoffit™ products are coated with our exclusive Hybrid Alkyd Emulsion™ (HAE™) or high quality semi-transparent stains, depending on the color selected. Utilizing enhanced flood coating technology, Woodtone is able to offer unique colors and clear topcoats designed to enhance the natural beauty of your new home or renovation project.

## Design Flexibility

- Faster installation saves time and labor costs
- End-Matching prevents waste
- Maintains the curb appeal of real wood
- Multiple colors available
- Gloss Clearcoat also available

## RealWood™ Warranty

RealSoffit™ is backed by a no-nonsense RealWood™ warranty against rot; up to 15 years. The RealWood™ warranty gives you the security and trust you need when making your buying decision. For a copy of the warranty program please visit our web site.

always there, naturally



## Features and Benefits

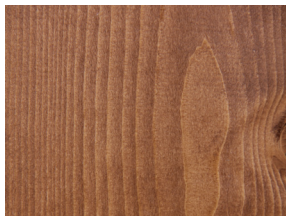
|                                 |   |
|---------------------------------|---|
| <b>Simple Installation</b>      | Ends are easily joined with the machined end matching; installation is fast, and easy .           |
| <b>Color Options</b>            | Standard & Custom Colors are available for your next job.   |
| <b>Curb Appeal</b>              | Fasteners may be hidden creating a clean and professional installation.                           |
| <b>Environmentally Friendly</b> | RealSoffit™ is manufactured from 100% renewable resources, unlike other soffit materials.         |
| <b>Unrivaled Versatility</b>    | RealSoffit™ is used in both interior and exterior applications. Extend the warmth inside and out. |



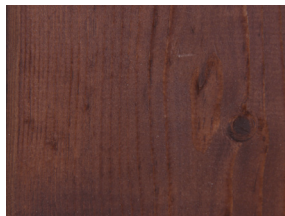
**Canadian Ice Lager**



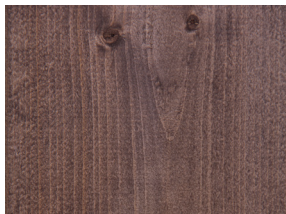
**Belgian White Ale**



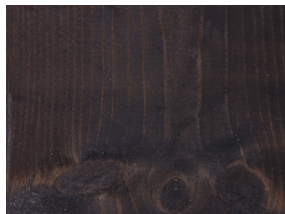
**Texas Honey Brown**



**American Nut Brown**



**English Porter**



**Irish Stout**

### RealSoffit™ - 1 x 4 / 1 x 6 / 1 x 8

Lengths: 10' - 14'

#### Standard Colors Available:

|                    |                    |
|--------------------|--------------------|
| Canadian Ice Lager | American Nut Brown |
| Belgian White Ale  | English Porter     |
| Texas Honey Brown  | Irish Stout        |

#### RealSoffit™ Options:

Textures: Smooth, Beaded Soffit, & Custom Profiles are available  
Options: Square edge, Semi-transparent and Solid staining available and RealSoffit™ CG (ColorGuard™ Coating System)

## Manufacturing Process

We hand select our products to provide an appearance grade soffit that delivers the curb appeal and quality that buyers expect. Our products are coated using specially designed machines to provide RealSoffit™ with the optimal amount of coating coverage to ensure long-term performance in the field. Hand packaged and wrapped with recyclable lumber wrap, we maintain quality control throughout the entire manufacturing process.

## Extended Top-Coat Warranties

National paint and sealant manufacturers have tested and approved RealSoffit™ for use with their products and offer extended top-coat warranties when their coatings are used with RealSoffit™. Also available is RealSoffit™ CG (ColorGuard™ Coating System). These factory applied coatings will extend top-coat protection up to 25 years. Visit [www.woodtone.com](http://www.woodtone.com) for a list of our paint and sealant partners.

## Installation

Simple installation makes RealSoffit™ the preferred choice for framers, siding contractors, and builders alike. Traditional tools such as saws, hammers, and nails are all you need. As with any trim product, it is important to protect RealSoffit™ prior to installation by keeping it covered and off the ground. Adherence to local building codes and following our installation instructions will result in product performance you can trust. Our full installation instructions are available at [www.woodtone.com](http://www.woodtone.com).

## Availability

RealSoffit™ is readily available throughout the United States and Canada through building material dealers. For multi-family jobs and large scale projects we can deliver direct to the job-site. For a dealer near you, please give us a call.